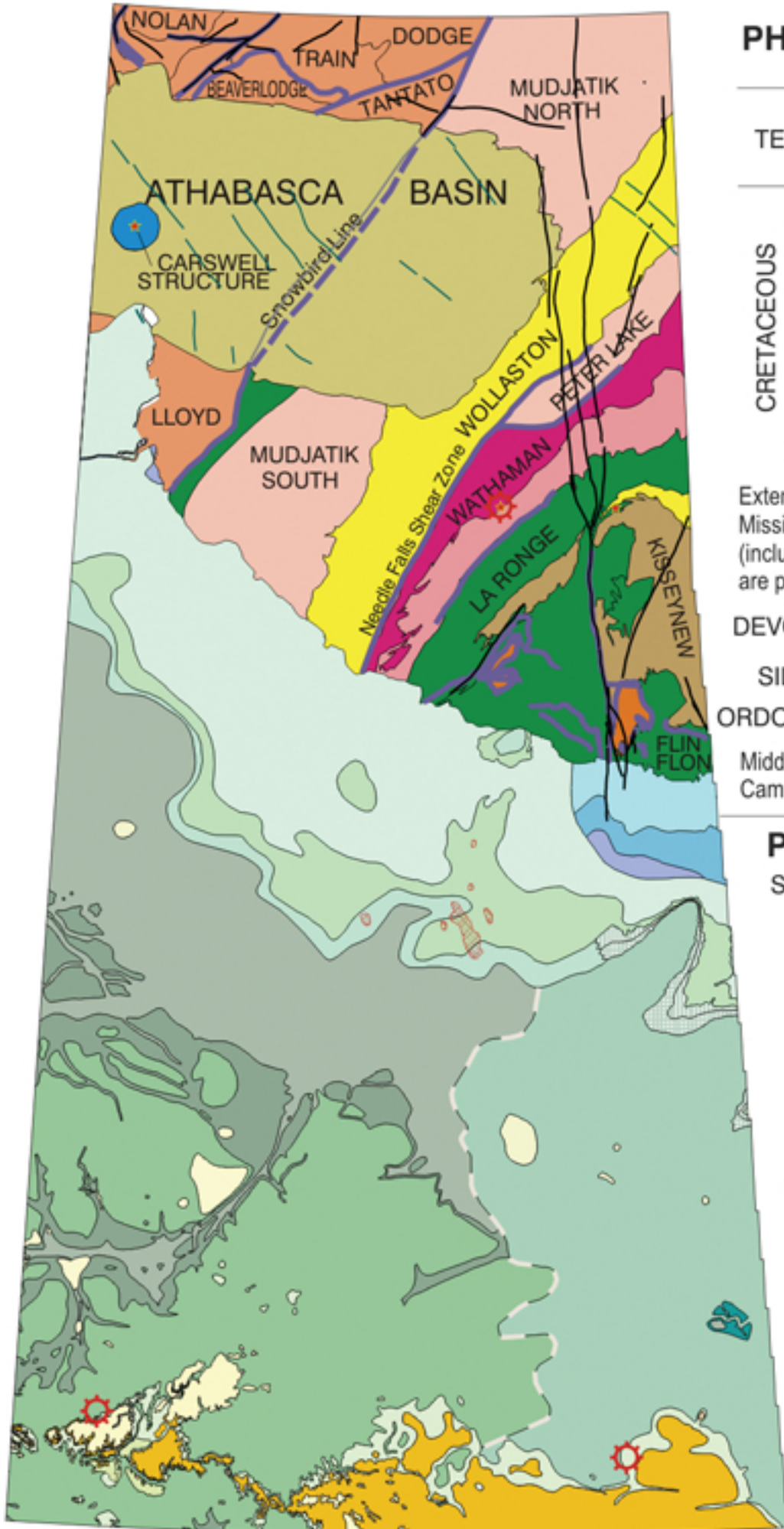


# SASKATCHEWAN BEDROCK GEOLOGY



## PHANEROZOIC BASIN

		Group/formation			
TERTIARY		Twm	Wood Mountain & Cypress Hills	Tu	Undivided Tertiary
		Tr	Ravenscrag		
CRETACEOUS	Upper	Kf	Frenchman	Eastern part of basin	
		Kef	Battle & Whitemud		
		Kb	Eastend		
		Kbr	Bearpaw		
		Klp	Belly River		
	Lower	Krm	Lea Park & Milk R.	Krm	Riding Mountain
		Kws	First White Speckled Shale, Carlisle, etc.	Kro	Odanah Member
		Klc	Belle Fourche, Fish Scale Zone, Westgate, Viking & Joli Fou	Kvr	Vermillion R.
		Km	Mannville	Klv	Favel

Extensive sections of the Jurassic, Triassic, Mississippian, and much of the Devonian (including the Prairie Evaporite), are present only in subsurface

- Kimberlite cluster
- Site of meteorite impact

**DEVONIAN**  
144 Ma

- Dwp
- Winnipegosis
- Ashern
- Meadow Lake

**SILURIAN**  
410 Ma

- Si
- Interlake

**ORDOVICIAN**  
441 Ma

- O
- Stonewall, Stony Mountain

Middle and Upper sections of the Cambrian are present only in subsurface

- ### MAIN PHANEROZOIC ROCKTYPES
- Conglomerate, siltstone, sandstone
  - Sandstone, siltstone, shale
  - Shale
  - Dolostone-limestone
  - Carbonate-shale

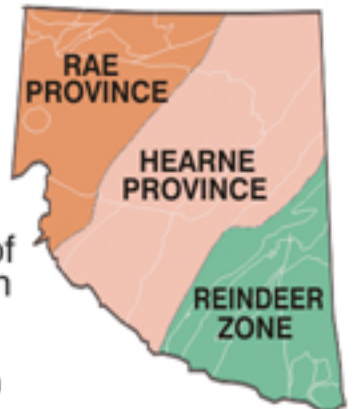
## PRECAMBRIAN SHIELD

- Shear zone
- Fault
- Diabase dyke

- ### MAIN UNITS OF THE REINDEER ZONE:
- Wollaston Group
  - Wathaman Batholith
  - Predominantly greenstone volcanics and granitoids
  - Greywacke/anatex granites of the Kisseynew Domain
  - Archean inliers of the Glennie Domain
- ca. 1.9-1.7 Ga.
- ca. 2.5 Ga.

**PREDOMINANTLY ARCHEAN**  
See text for outline of the geology of the Rae and Hearne provinces  
ca. 3.4-2.2 Ga.

Main divisions of the Precambrian Shield



50 0 50 100 150 km